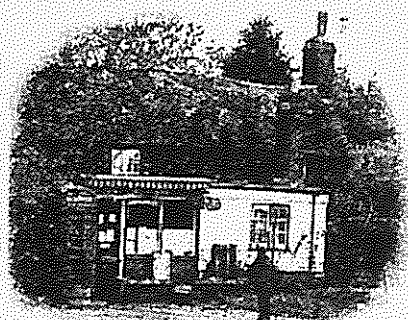


Aug. 98

# *Hambledon Parish Magazine*

## *St Peter's Church & Village News*



Price 40p

## H. PHILLIPS & SONS LIMITED

on the PETWORTH ROAD at WORMLEY ( A283 road )

Still running the business

Bryan and Des Phillips with  
Mrs H N Phillips "keeping an eye on things"

### Workshop

Tim Wellen  
Frank Ciaramella  
Simon Freemantle  
Rick Smith

Office Mrs Jean Mercer

### Forecourt/Reception

David Harris  
Allan Forster  
Steve Nash  
Andrew Danson

\* Top quality fuel

\* Top class lubricants

\* Assisted Forecourt service (most times)

\* Monthly account facilities available

\* MOT while you wait, by appointment

GM Accident Repairs

Body repairs, chassis welding and  
resprays.

(Gerald Perrett. Behind Main Garage)

BOSCH PARTS & SYSTEMS SERVICE —

Fully equipped with MODERN SERVICE AIDS

#### SERVICING & REPAIRS

\* ALL makes serviced to a high standard by trained and experienced staff.

\* Competitive prices, why not ask for an ESTIMATE for  
any of the following:-

- \* Tyres
- \* Batteries
- \* Exhausts
- \* Engine overhaul and replacement.
- \* Engine tuning for maximum economy and power.
- \* Clutches fitted
- \* Gearbox overhaul arranged
- \* Brake and suspension overhauled
- \* Shock absorbers
- \* Total wheel alignment

\* MOT chassis repairs arranged

Free loan car usually available but must be on customers insurance plus pay for fuel used during loan.

**DONT FORGET TO COLLECT YOUR PREMIER POINTS -ONLY ON FUEL PURCHASES**



Phone WORMLEY (01428) 682104

## Etheringtons Electrical Services Ltd.

*Free Quotations – Best Materials  
Personal Supervision  
For all types of electrical Installation and  
repairs*

*Telephone ( 01483 415566 )*

OFFICE, SHOWROOM and WORKS with SALES COUNTER  
133, HIGH STREET, GODALMING, GU7 1AF



The Electrical  
Contractors' Association

National Inspection Council for  
Electrical Installation Contracting



APPROVED CONTRACTOR

## MULLARDS FUNERALS

121 High Street, Godalming, Surrey GU7  
1AQ

**Tel. (01483) 860279**

A long-established Funeral Directors and  
Monumental Masons ensuring a personal and  
sympathetic 24-hour service, 7 days a week.  
Prepayments arranged.

*Godalming and Districts only  
independent funeral service.*

All enquiries without obligation

# Thought for August 1998

If you are having a motoring holiday or driving to your holiday resort, don't forget to have the car serviced – which reminds me of a story!!

## AND THE SAME TO YOU

It was the man at the garage who started all this. He thought it was a long time since he'd seen me there. "It's time you came in for a service" he said. I queried it. "I seem to be going along OK at present", I said. "You people have got a vested interest in this 'service' business. I don't see the point of it myself." "Well, let me explain what it's for" said the manager. "When you come in for a service you are in the hands of the Maker's authorised agent. He can spot faults and weaknesses which could lead to a lot of damage. Most breakdowns stem from undue wear and tear, just because small faults have not been corrected." "What kind of things do you check?" I asked. "Quite a few," he said. "For example, your steering. Does the car always do exactly what you intend and never slip out of control on a tight corner? Or again – how are your brakes? Can you stop when you must, even if you are gathering speed? And do you always stay stopped? For safety's sake, you need to be sure of that. And are your lights all they should be? Are your batteries charged and your contacts clean, so that in the dark or the fog you can find your way?"

"Then there is acceleration. Have you the power you need to keep going when the road is extra steep or you have a heavy load to carry. Many get overheated if they are overloaded or get held up in a traffic jam. And that can be dangerous! And of course, like everyone else, there's always need for a bit more grease. It really is time you came in for a service", he said.

"**AND THE SAME TO YOU**", I said to him. "Me?" he asked, somewhat surprised. "Yes, you! Not your car, but your character. There are bound to be faults that need pointing out and putting right. Don't risk a breakdown. Your maker's authorised agent (that's not me – I'm only His labourer) is at work in our place. You ought to let him check you over".

"How's your steering when instant decisions are difficult? Can you stop when you ought? Are you clearly seen as a shining example? Can you cope with unwelcome burdens? And keep your cool when you are held up? And, of course, like everyone else there's always the need for a bit more grace. It really is time you came in for a service. See you on Sunday?" I said.

## AND THE SAME TO YOU

Have a good holiday.

*Je Posai*



## **PARISH CHURCH OF ST. PETER, HAMBLEDON**

<b>Rector</b>	<b>Revd. Jolyon Trickey</b>	<b>01483-421267</b>
<b>Curate to Hambledon</b>	<b>Revd. John Postill</b>	<b>01483-420639</b>
<b>Reader:</b>	<b>Mr D. Jenkins (i.t.)</b>	<b>01483- 416084</b>
<b>Pastoral Assistant:</b>	<b>Mrs R. Mason, Clockbarn Farm</b>	<b>01483-417558</b>
<b>Churchwardens:</b>	<b>Mr J. Morris, Lower Burgate, Marwick Lane</b>	<b>01483-208375</b>
	<b>Mr N.H.T. Pollock, Brackenwood, Wormley</b>	<b>01428-682116</b>
<b>Church Treasurer:</b>	<b>Mr R.G. Williams, Bermonde, Hambledon</b>	<b>01428-682455</b>
<b>Secretary of PCC:</b>	<b>Mrs M. Parker, Feathercombe Farmhouse</b>	<b>01483-860339</b>
<b>Planned Giving:</b>	<b>Mr J.N. Taylor, High Stuart, New Road, Wormley</b>	<b>01428-682738</b>
<b>Scripture Union:</b>	<b>Mr &amp; Mrs J. Adams, Oakridge, Hydestile</b>	<b>01483-422611</b>
<b>Women's Fellowship:</b>	<b>Enquiries to Mrs J. Hardy, Pendle Cottage</b>	<b>01428-684733</b>

\*\*\*\*\*

### **Sunday Services**

**Full details of these and any other services are set out in the Calendar for the month in the body of the magazine**

\*\*\*\*\*

### **Other Information**

**Several Home Groups meet regularly, usually on the second and fourth Wednesday evenings in the month, at various locations. Further information from the Churchwardens or the Curate.**

**The Women's Fellowship meets on the fourth Wednesday in the month at 3.00 pm.**

**Baptisms, Weddings and Funerals should be arranged in consultation with the curate.**

**Where there is sickness or where a visit would be valued, the Curate would like to hear as soon as possible.**

**The Rector and Curate are normally off duty on Thursdays.**



# CHURCH CALENDAR

## AUGUST 1998

1 <sup>st</sup>	9.00am	Joint Prayer Meeting	Busbridge
2 <sup>nd</sup>	<u>TRINITY 8</u>		
	8.00am	Holy Communion (BCP 1662)	
	10.30am	Family service with Baptisms - crêche & coffee	
	6.30pm	Joint Holy Communion Service (with Busbridge) <b>At Hambledon</b> to celebrate the confirmation of the Union of the two parishes.	
9 <sup>th</sup>	<u>TRINITY 9</u>		
	8.00am	Holy Communion (BCP 1662)	
	10.30am	Holy Communion (BCP 1662)	
	6.30pm	Evening Worship	
16 <sup>th</sup>	<u>TRINITY 10</u>		
	8.00am	Holy Communion (BCP 1662)	
	10.30am	Morning Worship (ASB)	
	6.30pm	Evening Worship	
23 <sup>rd</sup>	<u>TRINITY 11</u>		
	8.00am	Holy Communion (BCP 1662)	
	10.30am	Morning Worship (BCP 1662) followed by shortened Holy Communion.	
	6.30pm	Evening Worship	
30 <sup>th</sup>	<u>TRINITY 12</u>		
	8.00am	Holy Communion (BCP 1662)	
	10.30am	Parish Communion (ASB)	
	6.30pm	Churches together (Godalming) Summer Evening Service - <b>Joint service at Busbridge</b>	



### FREEWILL OFFERING SCHEME

The total of planned giving in June amounted to £2,240 – 90.

John Taylor

# The Future Secured!

On the 1<sup>st</sup> August 1998 by Order of Her Majesty in Council the parishes of Hambledon and Busbridge will be united in one benefice. This is a confirmation of God's purposes for both churches and marks the completion of nearly two years of discussion and negotiation.

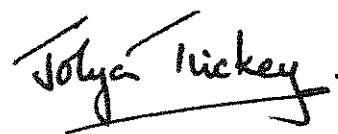
By virtue of the same Order in Council my own title and position will change from 'Priest in Charge' to 'Rector' of Hambledon [as well as Busbridge]. I am deeply thrilled about this, but not because of anything that this change says about my ministry. Rather, I am delighted because of all that the change of title means for Hambledon.

Long ago, in the mid 1980's, the living of Hambledon was suspended by the then Bishop of Guildford. The future of ministry in Hambledon has been uncertain ever since. There has been a succession of priests in charge [each moving on earlier than might have been desirable] and several inter-regna between ministers with associated periods of doubt about the future.

All this uncertainty is now removed! There is once again a Rector for Hambledon. Moreover the Diocese is committed to the long-term provision of both a senior curate who will take a leading role in Hambledon and suitable accommodation for them in Hambledon village. Where the School and many other institutions in Hambledon have had to close down, the future of the parish church of St Peter's, as a central part of village life, has been secured. Revd John Postill is here to stay and all we need now is the house!

These developments mean that we are able to plan together for the future of the Church in Hambledon. The shape of that future is yet to be determined. Some significant changes are likely, but can be embraced with confidence in their long-term benefits. There will opportunities to share people and resources with Busbridge. We shall need to come together more as a church family and to work together in teams. We must also maintain our commitment to village life as well as church life.....

i hope that you are pleased at what has been achieved and excited at the challenges which lie ahead. Do come and join our Service of Celebration held jointly with Busbridge, but in St Peter's at 6.30pm on 2<sup>nd</sup> August where we hope the Archdeacon will also be in attendance.



Revd Jolyon Trickey [Rector]

CHURCH CLEANING ROTA FOR AUGUST		CHURCH FLOWER ROTA FOR AUGUST	
31 <sup>st</sup> / 1 <sup>st</sup>	Elizabeth Jenkins	2 <sup>nd</sup>	Elizabeth Jenkins
7 <sup>th</sup> / 8 <sup>th</sup>	Pat Williams	9 <sup>th</sup>	Elizabeth Secrett
14 <sup>th</sup> / 15 <sup>th</sup>	Elizabeth Jenkins	16 <sup>th</sup>	Mary Parker
21 <sup>st</sup> / 22 <sup>nd</sup>	Holly Day	23 <sup>rd</sup>	Muriel Campbell
28 <sup>th</sup> / 29 <sup>th</sup>	Sally Falk	30 <sup>th</sup>	Muriel Campbell

## Hambledon Nursery School

The Sports Day was held in fine weather on Friday 3 July. After the races there were presentations to the staff who are leaving. A collection had been arranged by the parents and congratulations received from children past and present. A bench with an inscription was given to the school in gratitude to the headmistress, Mrs Stansfield, (who is retiring after 15 years) and her staff. Gifts were given to Mrs Stansfield, and to Mrs Unwin and Mrs Chesson who are also retiring; and to Mrs Underwood, Mrs Pegrum and Mrs Ebdon who are leaving.

A 'farewell luncheon' was held on 10 July at Vann to mark the retirement of Mrs Stansfield as head of the Nursery School since it started, and of Mrs Unwin and Mrs Chesson. Also leaving are Mrs Pegrum, Ebdon and Underwood. All the Trustees, past and present, and the other staff members attended the occasion and presentations were made to the leaving staff members. Mary Caroe, the chairman, thanked them all for their care and hard work which had made the school a flagship of nursery schools; with especial thanks to Brenda Stansfield who has led the school from it's tenuous start in 1983 with 14 children, 3 mornings a week, to the full time week and 70 children and more on roll at the present time.

## Wednesday Afternoon Group

Sorry some of you missed Mr Hall with his illustrated talk about birds. Frequent visitors, most of them to our own gardens. But what do we really know about their ways and habitat?

Did you know that in winter wrens slept about twelve together in one nest to keep warm. When you think of their small size, it's a good idea. And did you know that the cock bird builds several nests, then Mrs Wren goes and inspects them, before choosing one to her liking, wonder if she chooses one with matching curtains and carpets.

The cuckoo, now there's an amazing bird, laying one egg in someone else's nest a bit bigger but the same colour as the other eggs. The young one hatches first, pushes out the other eggs and reigns supreme, quickly outgrowing it's foster parents, who slave away to bring it up. Then it flies off to warmer places for the winter to come back in spring to start the cycle all over again laying the same coloured egg in the same type of nest.

It was a good afternoon, Mr Hall was easy to listen to and very informative on the ways of birds.

Where were you men? There is always an invitation to you all. Come and break the ice on Wednesday August 12<sup>th</sup> at 2.30pm on the Cricket Green or in the pavilion, by kind permission of the cricket club. Have a cream tea and join in, it's most enjoyable.

Now think positive about the weather it's going to be fine and warm

*Joan Hardy*

# ALPHA

ALPHA – What's that? A ten week course presenting the basics of Christianity in a friendly and informal way. Often in the setting of a meal —St Peter's Hambledon had one at the beginning of the year in the Village Hall with 60 people.

ALPHA – Why? - it enables the Church to reach out with the Good News of God's Love which we all need.

ALPHA – When next? After nationwide publicity for Alpha courses the Hambledon/Busbridge course begins at the end of September at St John the Baptist, Busbridge (more details later).

What the PAPERS say about Alpha :-

"British Christianity has stumbled across the big idea that has eluded it..... What distinguishes Alpha from other initiatives is the easy-going, relaxed feel of the proceedings - that and it's astonishing success."

The Times – February 1998

"Alpha courses have been run in Catholic, Methodist and Baptist churches and many report that it has been a very effective way of drawing people, young and old, back into it's church".

The Daily Telegraph – February 1998

"Where once there was Billy Graham, now there is Alpha..... one of Britain's biggest evangelising programmes. What Alpha offers, and what is attracting thousands of people, is permission, rare in secular culture, to discuss the big questions of life and death and their meaning".

The Guardian – March 1998

The phenomenal growth of Alpha Courses

1992	-	5 courses
1993	-	200 "
1994	-	750 "
1995	-	2,500 "
1996	-	5,000 "
1997	-	6,500 "
1998	-	9,000 courses (so far)

ALPHA - a final contribution (in prose) from a Busbridge participant (on the last course)

"ALPHA – forgive the cheek –  
The impudence – The nerve –  
For whom am I amongst the many  
That feels the need to write a word



About – Alpha  
 Sounds like, the name of a friend?  
 Is he or she, about to depart  
 Go away for a long time -, or just a while?  
 I really don't know.  
 I hadn't planned on this affair-  
 It sort of took me, unaware-  
 Now I feel I don't want it to end  
 This something special-  
 This something pure  
 Has ignited a spark, as with others I'm sure -  
 This Alpha phenomenon, I now realise  
 Has taken root.....  
 Grown a stem, produced a shoot.  
 Surely we - cannot shake hands now and depart  
 What once touched minds, has now touched heart

Mrs S. M-T 7.7.98

Alpha organisers – John and Jeannie Postill (01483 420639)

### Thank You

A big 'Thank you' from Jeannie Postill for all your prayers, cards and gifts.  
 Present situation = G.B. (getting better)

## ROBERTSON'S of BRAMLEY

Electrical Contractors  
 Television – Video Engineers



**RENTALS  
- SALES  
& SERVICE**

**MIELE, HOOVER SALES & SERVICE**

Telephone:  
**GUILDFORD 892207**

## G DOZERS



**All Groundwork . Fencing .  
 Patios & Ponds**

**NO JOB TOO SMALL  
 ANY WORK CONSIDERED**

*Colin Rapley*

ROWAN COTTAGE  
 WORMLEY HILL  
 WORMLEY  
 SURREY GU8 5TR

**Tel: 01428 683869  
 Mobile: 0973 797893**

# **HAMBLEDON PARISH COUNCIL**



A meeting of the Wormley and District Drainage Association (WADDA) with Southern Water was held on 3<sup>rd</sup> July. This had the advantage, by comparison with the Hambledon Village Assembly, of pre-circulated maps of Southern Water proposals and the attendance of representatives from Waverley Borough Council and the Environment Agency.

Southern Water emphasised the need to maximise connections to the proposed mains sewerage, to benefit the whole community. It was also stated that their proposals are preliminary and needing proving or altering. The process of discussions with individual householders will start in the next 3-4 weeks. They aim to make final proposals to their Board in November and to start the project in June 1999. They estimate it will take nine months to complete.

Information about connection charges was vague, but more information is promised. Householders are able to employ their own contractors to install connecting pipes but the Southern Water historic charge has been £40-60 per metre of pipe, depending on the conditions experienced. Southern Water prefer to take the sewer through publicly owned land, e.g. road verges, to minimise disruption to householders both during installation and subsequent maintenance. Householders can join together to use one connecting pipe to the sewer, but they are then jointly responsible for that pipe.

Much of the debate between WADDA members and Southern Water was about the need for more samples to be taken, to prove the need for more sewers at the top of Wormley Hill. The substance of their argument was that properties at the top of the hill are on sand through which the outflow from rural drainage systems drains, until it meets the clay beneath, and then it flows down the hill and emerges in the area where Southern Water propose to locate mains sewerage. This sewerage on its own won't solve the existing foul ground water problem in the New Road and Combe Lane areas.

Perhaps the same circumstances exist in Hambledon and unless properties in the Malthouse Lane area are provided with mains sewers, those lower down will continue to receive foul smelling and polluted ground water. The weakness of the Southern Water case is that their consultants, Oscar Faber, only took samples where householders complained of smell etc. and ground samples have to be wet, but were taken in June '97. Naturally the householders at the top of Wormley Hill don't have a problem to complain about because their problem is under the sand.

*Ton Campbell*

**The next meeting of the Parish Council is on Tuesday August 4<sup>th</sup>, at 8.00pm in the Village Hall.**

The meetings are open to the public and you will be very welcome. The meeting is open to questions from the floor from 9.30 to 9.45 and you will find the agenda on the notice boards at the Village Hall, Hydestile Crossroads and the Village Shop.

## THE CROSS COUNTRY CYCLE CHALLENGE 1998

### Notre Dame to St Paul's in under 60 hours

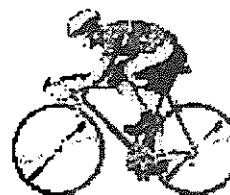
Very many thanks to everyone in Hambledon (and surrounds) who supported the 1998 challenge. The objective was to raise enough sponsorship to purchase a minibus for an orphanage in Romania. I am pleased to report that this has been successfully achieved. Our target of £10,000 should be exceeded when the final pledges are all collected.

This year's challenge was short and sharp.

- Six cyclists on the Eurostar to Paris on Friday, meeting-up with the support team of four at Gare du Nord and then on to Notre Dame before turning around and cycling back again! 110 miles later we were in Dieppe in time for Friday evening ferry back to Newhaven. At this stage glad to have survived the traffic of Paris and to have seen some sunshine before the rain set-in as we approached the coast.
- A very wet and windy Saturday morning saw us struggling along the South Downs from Newhaven on mountain bikes. In a literal sense, and especially to a cyclist, the word Downs is a misnomer – Ups being more appropriate! Add to this mud, wind and rain, and it is perhaps understandable that the 75 miles to Godalming (via the Downs Link) took us all day, arriving at The Willows in Milford to an enthusiastic welcome from friends and supporters, and ample portions of carbohydrate in a variety of forms!
- Sunday and only a few more miles to go. Happily discarding the bikes, cyclists took to canoes for a 20 mile paddle along the Wey from Godalming to the Thames – definitely a more peaceful and serene mode of transport, and no mud, except on the banks! Back on the mountain bikes as the Wey hits the Thames, and along the towpath to Kew. With flood-water covering most of the towpath and, in places, up to the cross-bars of the bikes, this part of the route was transformed from the unremarkable to the hilarious as we doggedly refused to get off the towpath or our bikes just for a drop of water. Another short stint on bikes from Kew, a three mile run through crowds lingering after the end of the London Marathon, and we were at St Paul's – 55 hours after setting out from Notre Dame.

Once again, thank you for your kind support. Watch this space for 1999!

*Paul Atkins*



## HAMBLEDON INSTITUTION

Quite often changes, even significant changes occur within an area and before we know all recollection of what existed previously disappears from local memory. Browsing through the Hambledon Village Album therefore revives memories for those who have lived here all their lives and proves to be most informative for relative newcomers like myself. It may very well reveal surprises for those who have only just moved into the village. Hambledon Park now occupies the site of the former Hambledon Institution.

For many years there was a large workhouse and infirmary in Hambledon which earned the reputation of being one of the happiest and best organised institutions of its kind in the country.

The Union Workhouse was built in 1786 and a tablet, which I believe is still in existence and should be re-erected on the site, informs us of the year it was "erected by the united parishes of Bramley, Chiddingfold, Dunsfold and Hambledon, for the better relief and employment of the poor".

It is reported that in 1786 The Workhouse was attacked by a mob during the march of 'Chartists' from Petworth, and the women and children took refuge on the common.

An extract from The Haslemere Herald towards the end of the last century paints a graphic picture of 'Festivities at the Workhouse, 1898'.

'The inmates of the Hambledon Union Workhouse spent a very enjoyable time on Boxing Day, when they "kept up" Christmas in right merry fashion. A large number of gifts were received, including toys for the children and tea and sugar for the old women". It is reported that many other gifts were produced by notables of the area and officers of the workhouse.

" Mr J. Borrowman and Mr Herbert, members of the Board, were in attendance, and rendered great assistance in carving and otherwise attending to the wants of the inmates."

"The Christmas tree was later on prettily illuminated, and the children's room gaily lit with fairy lamps, the youngsters receiving gifts from the tree. Then games were indulged in, and the children afterwards nicely sang lullaby songs and action songs, which were greatly appreciated".

Sounds rather more caring and friendly than Charles Dickens description of workhouse conditions!

As the Hambledon Home for the Aged the buildings continued in existence into the second half of this century. During the 1939-45 war there was a total evacuation of the inmates and the premises then housed the King Edward School until 1949.

More recently the site was occupied by the Oceanographic Institute before its present development.

*Derek Miller*

# On the Hambledon Beat

By PC Kit Lewis



Welcome to this month's news and views from the Hambledon Beat. I enjoyed meeting those of you who attended the village fete and who visited the crime prevention caravan. I should like to thank the volunteers who gave up their afternoon to pass on so many useful tips and advice about protecting your property from unwanted attention and this will be the theme of this month's newsletter...

## ***Spot the Deliberate mistake....***

Firstly the contact phone numbers I gave in the last issue of the magazine were slightly incorrect. I appear to have given the wrong number for the Farnham Local Information Centre. The revised and corrected numbers are below.

**Godalming Police Station 01483-414343**

**Local Information Centre 01252-716262**

This month my topic is one which has reared its ugly head in the village over the last few weeks and is much more common than you might think. Not all burglars break in to your property if they can get invited in. Increasingly crooks are turning to deception and guile to gain access to your house and these are just a few of them.

***Bogus Officials*** may be smartly dressed and claim to be from the council, gas board or other organisation - but their main objective is to con their way into your home and to see what they can steal.

***Bogus Dealers*** may offer to buy antiques, furniture or jewellery at what seems to be

good prices but once again the chances are that they are looking to trick you into selling something for a lot less than it's worth.

***Bogus Workmen*** may claim that they need to come in to check something or make urgent repairs when all they really want to do is steal. Also beware of those offering to make repairs, tarmac your drive or fit double-glazing. Often they will ask for a deposit then disappear or do a poor job very expensively.

**Genuine callers will normally make appointments first and will carry identification with their photograph**

*If you need to get work done then it makes sense to contact reputable local firms who will provide a quote and do work by agreement*

If someone calls without an appointment then you should check to see who it is by using your spyhole or looking through a window and always put your door on the chain before opening it. Always ask to see his or her identification - genuine callers won't mind if you do this and won't pressure you by telling you they are in a hurry.

If you aren't happy ask them to call back later and phone the organisation they claim to represent. If you are still unhappy then call the police and we will find out why they are calling.

***Remember  
IF IN DOUBT - KEEP THEM OUT!***

Take care and Mind how you go!

*If anyone has a topic that they would like me to address in these pages, or any other feedback on my efforts above then please address these to the Editor Derek Miller or to me at Godalming Police Station. For those with access my e-mail address is:*

*2069@surrey.police.uk*

# "BYWAYS"

## An Occasional Column Around Our Plot

The Highland cattle have gone, some to the big glen in the sky. EEC regulations? At least the walkers will be able to use the footpath through the field without being terrified! What next? Giant Venusian Lesser Spotted Pigs..... The Village Shop would be OK for bacon. Watch this space for next rare breed.

I see we are about to welcome 'Again' those gentle civilized gentlemen from Pipeway chewing up the lane Again!! Putting in some new water pipes Again!! Closing the road Again!!

So if you want to drive from Church Lane to the Village Green, you face a 6 or 7 mile detour.

What do you call men with Ten Gallon hats, a pair of six-guns and spurs .....well that's Pipeway! At least they will help out the pub by drinking their stock of Guinness.

A little bird told me of an agreement between the village and the builders of Hambledon Park, to erect a stone plaque commemorating the fact that Hambledon workhouse stood on this site. I was also told by that same little bird that the plaque lies cracked and stuffed under a bush!

Any other little birds out there?

*Magpie*



**P.S.** I hear that the editor is thinking of a 'Special' prize for the person who spots the most mistakes in his text.

*I am sure it could provide as much enjoyment as the Crossword! .Let me know. Ed.*

## Harvest Lunch

Following the Harvest Festival Thanksgiving Service on **Sunday October 4<sup>th</sup>**, there will be a Harvest Lunch in the Village Hall. This will start at 12.30. It is very much hoped that the lunch will be well supported by many people in the village, including families with children. This will take the place of the Harvest Supper and will give wider scope for people to attend.

Tickets will be on sale from the beginning of September from the Village Shop or Shirley Pollock on 682116.







## FINE FOODS

**Farm Shop, 01483 426789**

The freshest fruit and vegetables,  
hand picked from our Farm  
Locally produced, speciality foods  
150 British and Continental cheeses  
Gourmet ingredients, a keen cook's  
paradise



## FRESH FISH

**Rex Goldsmith, 01483 427665**

Specialising in prime Cornish fish



## FLOWERS

**Flower Shop, 01483 427971**

Beautiful hand-tied bouquets by  
imaginative florists

Flower creations for every occasion  
Fine China, glass and candles



## MAIL ORDER

**Secretts by Post, 0500 11 07 11**

Colourful flowers & fresh farm  
produce by post to anywhere in the U.K.



## GARDENS

**Garden Centre, 01483 426633**

Over 20,000 quality plants  
on display  
Award winning indoor conservatory  
& plant area  
Knowledgeable staff  
Gifts for all occasions



## PYO

**PYO, 01483 426543**

Open June - September  
Landscaped grounds, lakes & wildlife  
Luscious soft fruits and vegetables to  
pick, fresh from the field  
Childrens' fun weekends



## EATING OUT

**Secrett Rendezvous at Secretts  
Garden Centre - continental style  
coffee shop with light meals**

**Eliza's at Secretts Farm Shop  
- 1930's tea room, music and  
collectables**

**The Garden Room at Secretts PYO  
- conservatory café with garden  
fresh salads & cream teas**

**FREE PARKING General Enquiries 01483 426655**

**Secretts • Milford • Surrey**



## Gardening reminders for August

**Save seeds** of annuals and  
perennials: collect seed  
heads when they start to  
turn brown and place in a  
paper bag. Hang stems in  
a dry place until seeds  
ripen. Store seeds in a  
labelled airtight container.

**New purchases :** *if* the  
weather is very dry most  
shrubs and perennials are  
best kept in their pots until  
autumn.

**Maintain...**containers and  
hanging baskets: water at  
least once a day for large  
containers, more often for  
smaller pots.

**Holiday precautions:**  
Deadhead flowers where  
practical. Sweet peas  
should be cut before you  
go to ensure a contin-  
uation of blooms.

Mow the front lawn before  
you go. Long grass may  
attract unwanted intruders.

*Where the choice is growing*

## Just for a laugh



A WELL educated boy from Surrey went to Yorkshire for a holiday. He became friendly with a local boy. On their first walk together the well-educated boy said to the other boy, "You will have to mind how you speak to me because I am very well up with my grammar."

The Yorkshire boy replied, "Oh! I'se better in wi' mi Granpa ....."



## PARISH & PEOPLE

Congratulations and every good wish to Sally and Chris Thornton on the arrival of their son, Mark.

Close on his heels came Catherine Coleman, whose first fortnight turned out to be a bit of a cliff-hanger for all concerned. It is thanks to the dedicated staff at the hospitals at Guildford and Tooting that has enabled Catherine to be reunited with her family, Tim, Brigitte and brother Michael at The Old School House. Congratulations to all the Coleman family who have shown us all an air of calm throughout this difficult time - headed of course by those village stalwarts Mic and Sylvia justly proud of their 4<sup>th</sup> granddaughter. The church family of St Peter's has had Catherine very much in their thoughts and prayers and we give thanks to God for so graciously answering these concerns as we continue to remember Catherine in the days that lie ahead.

Mrs Joan Hassard-Short has recently undergone an operation for the removal of a cataract; we look forward to hearing that it has all been a great success and that Joan will find much benefit in her vision. We remember Joan and also her husband' John.

Mrs Betty Brown, a St Peter's worshipper living in Milford, has also undergone surgery for removal of cataract; we send to her our very good wishes for a speedy return to driving her car which will enable her to return to St Peter's.

We are pleased to hear that the half-yearly collection from those who hold boxes on behalf of The Children's Society amounted to £99.14 for the period to the 30<sup>th</sup> June. Many thanks to all who hold these boxes and support this very worthy cause; if anyone would like to have a box, Joan Vickery is always pleased to supply - she can be found on 01428 684101.

Mr Peter Brommell has done a quick in-and-out job with a heart attack which nobody knew about until he was safely back with us again. Well done Peter to get back into harness so quickly and our good wishes go to you and to Dorothy. We are all so grateful for the good work that you do in keeping the Hambledon Garden of Remembrance in such order, although Peter says at present it is just Dorothy, with him advising from the sidelines!

Still on the subject of the churchyard - we have been so grateful lately to have the tap repaired so that nobody gets a dislocated wrist in trying to turn it on! Also the area around the bonfire has had a facelift and the containers for rubbish have been relocated. Many thanks to the kind parishioners who have so nobly carried out these tasks -we are most grateful but seldom do we remember to say so!

It was good to welcome Auntie Rose Sage and her family to St Peter's on the Sunday following her 104<sup>th</sup> birthday. We understand that some of her family had come over from Canada for the event. It is not many churches that can boast that their congregation consists of a lady of such advanced years and one that can still make the journey to

church! Well done Rose and we look forward to hearing that you will soon be back at Oliver Cottage.

During August Mr and Mrs Cecil Bear celebrate their 64<sup>th</sup> Wedding Anniversary. Many congratulations from us all and we hope that they have a good day spent with their family in suitable style. Cecil and Margery were regular worshippers at St Peter's in past years when travelling was easier but they are a couple we greatly admire and remember often.

Also during August Mrs Georgie Cave celebrates her 91<sup>st</sup> birthday. We send our good wishes to Georgie for a very happy day.

It was disappointing that THE BIG MATCH had to be postponed on Sunday 12<sup>th</sup> July when St Peter's were scheduled to play Hambledon at cricket. The rain turned the ground into a soggy mass that even Botham and Boycott thought it best to call it a day! Secretly we rather think that the rain may have been an answer to prayer in a certain quarter! Anyway hopefully another date may be found in September and we all look forward to the promised B-B-Q and a good game!

*Pat Williams*



## **Hambledon Village Fête**

This year's Fête, held on Saturday 27<sup>th</sup> June, was successful both socially and financially. We were also helped by good weather though a minor whirlwind did root up and badly damage a loaned and newly bought canopy!

As usual very many people have to be thanked for helping both on the day of the Fête and also for donating prizes, articles for the stalls and cakes and teas. Quite a number of new villagers helped this year.

The arrangements for the event were spread over a number of associations or groups and this greatly reduced the workload.

See over for statement of accounts .....

Associated Groups		Total less Expenses	¾ to Group	¼ to Mary Parker Memorial Fund
<b>Tear Fund -</b>	Refreshments	332.60	249.45	83.15
	Bowls	40.00	30.00	10.10
<b>St Dominics -</b>	Auction	320.00	240.00	80.00
<b>Village Hall -</b>				
	Cakes	228.75		
	Books	241.15		
	Bric-a-brac	169.20		
	Hoop-La	81.50		
	Toys	27.95		
	Plants	184.67		
	Putting	50.70		
	Grand Draw	365.81	1,349.73	337.43
<b>Cricket Club -</b>				
	Tombola	140.00		
	Bowling	24.00		
	Egg Toss	17.00	181.00	45.25
<b>W.A.G. -</b>	Accessories	90.00	67.50	22.50
<b>Brownies -</b>	Treasure Hunt	40.00	40.00	
<b>Natural Childbirth Trust</b>		60.00	60.00	
<b>Missions</b>		?	?	
<b>MPMF</b>		16.70		16.70

#### Non-Associated Activities

Amusements	60.00	
Ice-cream	17.50	
Strikers Nursery	20.00	
Alfie's Train	100.80	
Coconut Shy	128.50	
Dog Show(after expenses)	7.50	
Pitt's Boule	55.00	399.30

#### General expenses deducted from the above:

Red Cross Donation	20.00	
Cup Hill Morris Donation	50.00	
Cricket Club Donation	40.00	
Surrey Advertiser	70.00	
Loud Hailer	15.00	
Damages	50.00	
Poster Paper	8.28	263.28

Leaving a further  
To **MPMF**  
Total received

136.02

**£731.05**

*Mic Coleman*

## Comment

What a perfectly splendid day it was! I mean the day of the Village Fête of course. Even the weather improved for the duration of the actual event although we were given a reminder later in the day of just what a disaster it could have been.

However it isn't always remembered that an immense amount of work is necessary to ensure the success of such an occasion, nor is it known that a mere handful of people have been responsible for carrying out that work. Nobody waves a magic wand when it is all over and everybody has gone home. The same trusty band stay behind to ensure that everything is packed away and the site left as it was found.

To these people we owe a particular debt of gratitude because without their enthusiasm and willingness to give time and considerable effort we would not be able to enjoy this very special occasion. In particular we should thank Mic Coleman for once again taking on the onerous task of ensuring that Hambledon had it's bi-annual fête.

One cannot help wondering who will organise the next fête. Will any of the younger members of the Hambledon community be coming forward to take over from those who have enjoyed the challenge during the last ten years?

Let us hope that there will be some individual or organisation with the desire and enthusiasm to continue what, I believe, is one of the highlights of the calendar in Hambledon.

Editor



### **DEREK FREEMANTLE**

**Garden Maintenance and Groundwork**

**Dare Mead Hambledon GU8 4ND**

*Estimates Free*

**Tel: 01428 682849**

### **Underwood & Croxson M.'s R.C.V.S. Veterinary Surgeons**

**At**

**37, New Road, Milford**

**Tel: 01483 414747**

**&**

**24, St Johns Street, Farncombe**

**Tel: 01483 421833**

**Emergency weekend surgery at  
Greyfriars Farm, Puttenham**

### **FRENCH & SPANISH TUITION FOR ADULTS & CHILDREN**

**CAROLINE PITT, B.A.**

*Experienced Language Teacher*

- ♦ GCSE FRENCH & SPANISH CLASSES FOR ADULTS
- ♦ COMMON ENTRANCE, GCSE and A LEVEL COACHING
- ♦ TRANSLATION WORK
- ♦ TELEPHONE CALLS ABROAD MADE FOR YOU

**For further information:**

**Tel/Fax: 01428 682940**

### **HAMBLEDON NURSERY SCHOOL**

**for children aged 2 – 5 years**

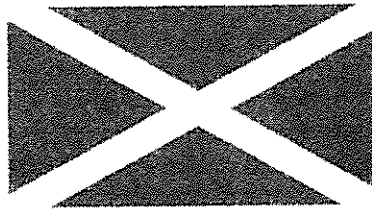
**Qualified staff and a high adult/child ratio**

**Excellent equipment**

**&**

**large enclosed garden**

**Telephone 01428 684892**



The **Hambledon Scottish Country Dance Society** was started in March of this year and has met three times to date. The group normally meets every two months in the Village Hall. Full instruction is provided and no previous experience is necessary. The emphasis is on learning reels and having fun. We hope to hold a Scottish Ball early in 1999 where class attendees can proudly demonstrate their reeling skills. The next session will be on 3<sup>rd</sup> September 1998 in the Village Hall from 8.00 till 10.00 pm. All are welcome. Further events will be advertised in the Village Shop. We do ask for a contribution of £1 per head to cover the cost of the hall. For more information please contact Sally Falk on (01428) 683863 or Graham Walker (01428) 682086.

### **Hambledon Village Album**

*Reports and pictures of many events, people, special occasions and properties are recorded in the Hambledon Village Album. The album can be borrowed, for a small fee, from the Village Shop. The fee helps towards the cost of the conservation of the album.*

**The repair and conservation of the Hambledon Village Album was undertaken in fond memory of Mary Parker by her many friends. She lived at Feathercombe, in Hambledon, from 1910 – 1994 and made a large contribution to every aspect of village life.**



INTERESTED?  
Phone Tony Strudwick on 01483 428564

"Our doctor's been telling me for years that I ought to take things a bit easier and finally I'm beginning to believe him. It's getting to the stage where actions creak louder than words."



# HAMBLEDON CRICKET CLUB



Results last month (L) = Village League Game

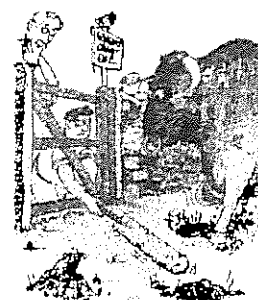
Date	1 <sup>st</sup> XI		Colts
Sat 4 <sup>th</sup>	Rudgwick H Lost Rudgwick 155 Hambledon 144 Bob Cunningham 104 not out – still lost!	Fri 3 <sup>rd</sup>	Alfold H Lost, Alfold won on last ball of the match
Sun 5 <sup>th</sup>	Dunsfold (Allens Cup) - lost	Sun 5 <sup>th</sup>	Grayswood A Won Grays wood 83 for 4 – 20 <sup>th</sup> over Hambledon 84 for 2 – 13 <sup>th</sup> over
Sat 11 <sup>th</sup>	Alfold – cancelled rain.	Wed 8 <sup>th</sup>	Slimfold – H – cancelled rain
Sun 12 <sup>th</sup>	Pirbright – cancelled rain	Sun 12 <sup>th</sup>	Shackelford – H – (Under XI,s) cancelled rain

## August Fixtures

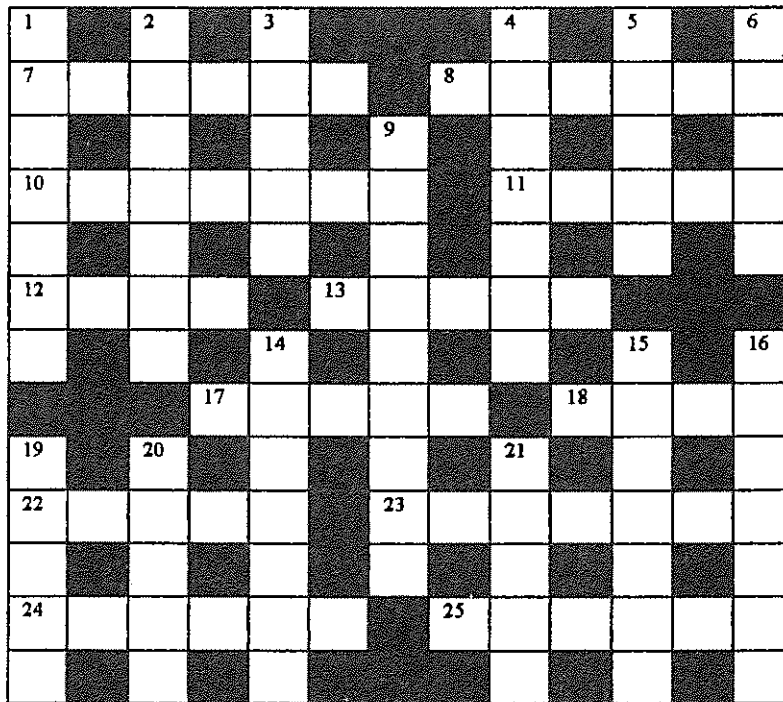
1 <sup>st</sup> XI Fixtures			2 <sup>nd</sup> XI Fixtures	
Sat 1	Cranliegh 3rds	A 2.00	Daily Mail	H 2.30
Sun 2	Follies Farm	H 2.00		
Sat 8	<b>Shalford</b>	H 2.00	Pepper Harrow	A 2.30
Sun 9	Ancient Mariners	H 2.30		
Sat 15	<b>Bramley</b>	H 2.00		
Sun 16	Flemish Giants	H 2.30	Loxwood	A 2.30
Sat 22	Ewhurst	A 2.00		
Sun 23	<b>Wonersh</b>	H 2.00	Hale	A 2.30
Sat 29	<b>Holmbury St Mary</b>	H 2.00	Shere	A 2.30
Sun 30	Shottermill	H 2.30		
Mon 31			Merry Harriers	H 2.30

### Colts

Sun 16<sup>th</sup> Slimfold Away



# Easy Crossword



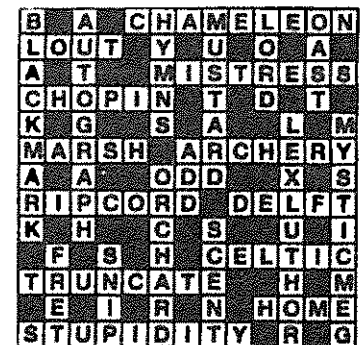
## ACROSS

- 7 Mix informally (6)
- 8 Office (6)
- 10 King or Queen (7)
- 11 Blaspheme (5)
- 12 King of the jungle (4)
- 13 Use a pen (5)
- 17 Circus performer (5)
- 18 Garden of England (4)
- 22 Respond (5)
- 23 Blood drinking bat (7)
- 24 Religious speech (6)
- 25 Somerset town (6)

## DOWN

- 1 Finger protector (7)
- 2 Desert (7)
- 3 Snake (5)
- 4 South African holiday
- 5 Tom's adversary (5)
- 6 Quilt (5)
- 9 Radio band (5, 4)
- 14 Group of soldiers (7)
- 15 Accept as true (7)
- 16 Church tower (7)
- 19 Assignment (5)
- 20 Capital of Egypt (5)
- 21 Urge forward (5)

## Solution to the July issue



## Number Quiz

Example :- 20 N on a DB Answer – 20 numbers on a dart board

- 1. 2 W B and O R B in a B G
- 2. 3 B M see H T R
- 3. 12 D P
- 4. 32 W and 32 B A on a C B
- 5. 3 W M from the E
- 6. 1066 and A T
- 7. 12 D of C
- 8. 12 N on a C F
- 9. 2 G of V
- 10. 7 W of the W

Answers to July Quiz: 1. 3 men in a boat 2. 1001 Arabian nights 3. 1 flew over the Cuckoo nest 4. 15 men on a dead man's chest 5. 13 is a baker's dozen 6. 186,000 miles per second is the speed of light 7. 24 hours from Tulsa 8. 240 volts alternating current 9. 32 degrees Fahrenheit at which water freezes 10. 200 pounds for passing go in a game of Monopoly

# Poetry Corner

## HAMBLEDON

*Hambleton is but a little place  
Home to five hundred of the human race.  
The Surrey Hills stand guard around  
So joy and peace can there be found.  
The Church has doors both open wide  
To welcome all who come inside.  
The Village Shop needs folk with time to lend  
To serve the others who come to spend.  
The Cricket Club are often seen  
Playing many a match upon the green.  
For families with under fives  
The Nursery School can change their lives.  
And older boys who love a ball to kick  
Can join the Football Club run by Mic.  
The Brownies provide many a craft and game  
And spread the word of Brown Owl's fame.  
While Oakhurst Cottage could supply  
The wants of those interested in days gone by.  
Each month the Wednesday Afternoon Group meet  
For an interesting talk and something to eat.  
But if any are worried they're over weight  
Sally's aerobics get them in a fitter state.  
So, all in all, there is plenty to do  
And most folk are happy – the sad are few.*

Anon



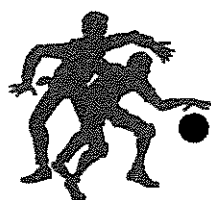
The above poem was submitted by a villager, in anonymity, wishing to hide their light under the proverbial bushel. Please let me have your contributions, either penned by your own fair hand or just a copy of your favourite poem.

## **News from St Dominic's**

On Wednesday 8<sup>th</sup> July, St Dominic's School held 'Fun in the Sun' day. All staff and pupils thoroughly enjoyed a range of events which was aimed at highlighting Health Education Authority guidelines on increasing awareness on the effects of sun exposure and particularly sunburn on children under the age of 15. Activities offered included a visit to Winkworth Arboretum, a guided tour of Milford Common, and a complete day at Queen Elizabeth Country Park. Children were also involved in exercise groups such as circuit training, swimming and archery. Other summer fun experiences were sand castle competitions, outdoor art activities, summer cooking sessions and drama groups. Throughout the day, videos were shown on how youngsters can take precautions to avoid the effects of skin cancer in later life. The whole day highlighted how it is possible to enjoy a wide range of activities safely throughout the summer.

The final feature was a visit from the 6'10" international basketball star, Martin Henlan, organised by the Guildford ex-Round Table. Their Community Service Chairman, Malcolm Higgins, presented an award entitled 'Make a Wish come True' to pupil, Ken Neville, who has a medical condition called Obliterative Bronchiolitis. Despite the breathing difficulties associated with this condition, Ken has been a keen supporter and player of basketball, so to receive his award from a professional player such as Martin was indeed a dream come true. The award itself was a full size basketball post for use at home. Martin Henland followed up the presentation with a coaching workshop for pupils within the school. His visit was extremely successful and his magnetic personality enabled the children to enjoy themselves to the full. St Dominic's is grateful to acknowledge the commitment and value of the work of ex-Round Table members, whose Trust Fund grant wishes for deserving children, and who provide an invaluable 'behind the scenes' service to the local community.

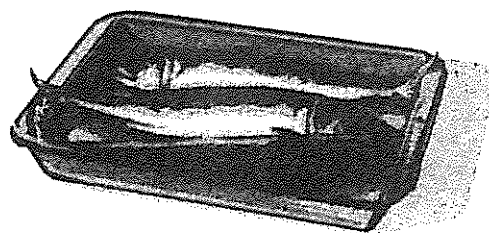
The term culminated in the celebration of 24 years service by the Reverend Lawler known to colleagues as Jim, who retires from September 1<sup>st</sup>. Jim has held a variety of posts during his time at the school, including class teacher, religious teacher, care worker, counsellor and school chaplain. He often combined many roles in his contribution to enabling the children attending the school to overcome their special needs. Staff from all departments, pupils past and present, parents and governors attended a final Valedictory service during which gifts were presented. One of the highlights was the great honour of a papal blessing endorsed by Pope John Paul II. It is impossible in a few words to portray the effect and value of the work so willingly undertaken by Jim. Emotions shown and expressed during the service conveyed the depth of feeling and gratitude from the school community towards this very special man. He will be greatly missed, and will always be a welcome visitor to the school.



## Welcome to "The Best" Cookery Corner in the South East

*This recipe comes from the West Country, taken from a local cookery book !!*

*Guy Lemieux*



### Marinated Mackerel Fillets (serves 4)

- 2 Dessert Apples, cored and cut into thin rings
- 4 Smoked Mackerel Fillets
- Juice of 1 lemon
- ¼ Pint of dry cider
- 8 Black Peppercorns
- 8 Juniper berries (slightly crushed)
- 1 Small onion, cut into rings
- 4oz Black seedless grapes

Put the apple in a shallow ovenproof dish. Add the mackerel, flesh side down, make diagonal slashes on skin side – add remaining ingredients. Cover and leave for at least two hours.

Cook at 190° C (Gas mark 5) for 30 minutes.  
Serve hot with a potato and lettuce salad.

### THE CELLAR COFFEE BAR

For coffee, Homemade Cakes & Light Lunches  
Open: Tues – Sat. 10.30 - 4.30 & 7.00 -10.30pm  
Sunday: 7.00 – 10.30pm



Crown Court, Godalming  
Tel: 01483 417097



*A man can be high up in his own estimation and still be a long way from the top.*

# **HAMBLEDON VILLAGE SHOP**

**01428 682176**

August and one of the greenest I can remember, must be something to do with the odd spots of rain we've been having. Are we all hoping for an Indian summer? You bet your life!

Try a touch of luxury with our August special offer. Buy a bottle of Pimms and a 2 litre bottle of lemonade for only £12.50. Just right for the Indian summer that's coming.....

Why not have a browse through our catalogue and save some time on cooking when you entertain your friends by ordering delicious quiches, turkey breasts and all delicatessen items from the shop.

We have a special oven now to keep all your pies, sausage rolls etc. piping hot.

***We always need help in the shop. Can you spare two hours a week or even two hours each fortnight. At present we are having difficulty filling two permanent vacancies on Mondays and Fridays 3.30 to 5.30 every other week. Please contact Guy on the above number if you can help.***

## **Local Names IV**

Coleman (Yes you Mic!)

'Coleman' 1066 Domesday Book

'Colemanus de Eston' 1176 Buckinghamshire

In the North usually 'Colmán' from the old Irish, or from Norse Columaán.

In the South from old German Col(e)man. In the Sussex subsidy rolls both 'Coleman and Collier' are frequent surnames, both probably mean 'Charcoal-burner'.

## **August Birthdays**

Alan Wicker	2 <sup>nd</sup> 1925	Napoleon	15 <sup>th</sup> 1796
Terry Wogan	3 <sup>rd</sup> 1938	Barry Norman	21 <sup>st</sup> 1933
Queen Mum	4 <sup>th</sup> 1900	Sean Connery	25 <sup>th</sup> 1930
Mata Hari	7 <sup>th</sup> 1876		

## **Schoolboy Howlers 4**

Did you hear about the two television aerals that got married? Well, the wedding was awful, but the reception was brilliant! *Boom Boom.*

*Ross Kilby*

## **Teamwork**

There are four people, named Everybody, Somebody, Anybody and Nobody. There was an important job to be done and Everybody was asked to do it – Everybody was sure Somebody would do it, Anybody could have done it but Nobody did it – Somebody got angry about that, because it was Everybody's job – Everybody thought that Anybody could do it but Nobody realised that Everybody wouldn't do it. – It ended up that Everybody blamed Somebody when Nobody did what Anybody could have done. **(Ring any bells?)**



# Nigel Garrick

**Landscape Gardening  
Amenity & Garden Maintenance  
Fencing, Tree Surgery**

**Tel: 01483 200446**

**WITLEY STATION HIRE**

**HIRE \* HIRE**

LOW PRICES  
DELIVERIES ARRANGED  
OPEN WEEKENDS & BANK HOLIDAYS

**HIRE \* HIRE**

EASY TO FIND  
EASY TO PARK  
QUALITY EQUIPMENT

**HIRE \* HIRE**

D.I.Y. TOOLS  
GARDEN / HOME / CAR  
BOUNCY CASTLES / PARTY LIGHTS

**AND MUCH MORE...**  
Entrance to Witley Station - Wormley  
**01428 685055**

**MRS SALLY FALK**  
Solicitor

**AT HELMAN GRAHAM-SMITH**  
Solicitors & Notaries  
20 Bridge Street  
Godalming GU7 1HY

**Tel: 01483 425866**

**Comprehensive Legal & Notarial Service**

**Estimates Given**

**FREE INITIAL CONSULTATION**



## Editors Note !

Material for inclusion in the September edition of the magazine must be received at the address below no later than August 23<sup>rd</sup> in order that the magazine is available for distribution on the last Sunday in the month.

Material for the following features would be particularly welcome:-

Gardening

Childrens' page

History of properties within the village.

Village characters.

Reports of holidays, adventures etc.

Local walks.

Natural History

Derek Miller  
Meadow Cottage  
Church Lane  
Hambledon  
Nr Godalming

**Tel: 01428 684362**

## **Useful Information & Telephone Numbers**

### **G.P. SURGERIES AND HEALTH CENTRES**

<b>Witley – The Surgery, Wheeler Lane, Witley GU8 5RQ</b>		
<b>Tel:</b>	<b>Doctors</b>	<b>01428 682218</b>
	<b>Community Nurses</b>	<b>01428 685249</b>
	<b>Health Visitors</b>	<b>01428 685249</b>
<b>Milford – Hurst Farm Surgery, Chapel Lane, Milford GU8 4EG</b>		
<b>Tel:</b>	<b>Doctors</b>	<b>01483 810097</b>
	<b>Community Nurses</b>	<b>01483 860429</b>
<b>Crossroads Surgery, Church Road, Milford GU8 5JQ</b>		
<b>Tel:</b>	<b>Doctors</b>	<b>01483 414461</b>
	<b>Health Visitors &amp; Community Nurses</b>	<b>01483 415564</b>
<b>Chiddingfold – Woodside Road, Chiddingfold, Godalming GU8 4QD</b>		
<b>Tel:</b>	<b>Doctors</b>	<b>01428 683174</b>
	<b>Community Nurses</b>	<b>01428 683735</b>

### **HOSPITALS**

<b>Royal Surrey County Hospital</b>	<b>01483 571122</b>
<b>Milford Hospital</b>	<b>01483 782000</b>

### **Equipment for short term use**

Some items only required for a short time (usually 3 months) may be borrowed. The type of equipment available includes bed blocks, bed cradles, back rests, commodes, wheelchairs, bed pans, urinals etc.

**Contact:** Medical Loans Service, British Red Cross, Woodlands Road, Slyfield Green, Guildford GU1 1RL (10-1230pm Mon-Fri, 10-11.30 Sat) **Tel:** 01483 532117

### **POLICE**

<b>Godalming Police Station</b>	<b>01483 414343</b>
<b>Local Information Centre</b>	<b>01252 716262</b>

### **NEIGHBOURHOOD WATCH CO-ORDINATORS**

Area 1	Mr R. Kilsby	Hydestile	01483 423637
Area 2	Mr M. Atkins	Church Lane	01428 683704
Area 3	Miss J. Woolley	Woodlands Lane	01428 684213
Area 4	Mrs C. Pitts	Malthouse Lane	01428 682940
Area 5	Mr A. Hammond	Cricket Green	01428 683625
Area 6	Mr J. Tidmarsh	Lane End	01428 682067
Area 7	Mr I. Campbell	Feathercombe Lane	01483 860264
Parish Council Representative	Mr R. Vickery		01428 682036

### **UTILITIES**

<b>Thames Water (Customer Enquiries)</b>	<b>0645 200800</b>
<b>Southern Water (Customer Enquiries)</b>	<b>0845 2780845</b>
<b>Southern Electric (Emergency)</b>	<b>01256 59191</b>
<b>British Gas South East (Emergency)</b>	<b>01703 639937</b>

## GENERAL

Borough Hall 01483 861111

Cinema Borough Hall (Tickets & Information) 01483 869214

Library 01483 422743

Hambledon Village Shop is able to arrange deliveries . 01428 682176  
Half day closing — Tuesday and Saturday

Train Information  
Times and Fares for all national services 0345 484950

## Buses

Hambledon and Guildford via Hydestile Godalming & Farncombe  
Guildford or Godalming to Hambledon via Farncombe, Godalming & Hydestile

### Mondays, Wednesdays & Fridays

Lane End, Wormley Lane	0955	1310	Guildford, Friary Bus Station	-	1420
Hambledon, Village Hall	0956	1311	Godalming, Sainsburys	1247	1445
Hydestile, Cross Roads	1001	1316	Godalming, High Street	1250	1448

No Service on other days or Public Holidays

Your local  
property professional  
with international  
connections.

**HAMPTONS**

93 High Street, Godalming, Surrey GU7 1AL. (01483) 417222

HAMPTONS RESIDENTIAL: OFFICES IN ENGLAND, SCOTLAND, THE CHANNEL ISLANDS AND HONG KONG.  
WITH ASSOCIATES IN EUROPE AND THE USA.



ESTATE AGENTS AUCTIONEERS VALUERS  
SURVEYORS & LAND AGENTS

SALES & ACQUISITIONS COUNTRY HOUSES COMMERCIAL OVERSEAS  
PROFESSIONAL SERVICES AGRICULTURAL AND LAND RESOURCES  
RESIDENTIAL DEVELOPMENTS  
PROPERTY AUCTIONS RELOCATION

**FINE ART SALE ROOMS**

Godalming Tel: (01483) 423567

Valuations prepared for sale, insurance and probate purposes.  
Regular specialist sales of Antiques and Fine Art, General Furniture  
and Furnishings.



**EXERCISE FOR EVERYONE**  
Timetable at Hambledon Village Hall

**FIRM FRIENDS** is  
**SALLY PARKER & VICKIE GOFFEE**  
Both are highly qualified  
And experienced exercise teachers  
Tel: Sally (01428) 682591  
Vickie (01428) 683108

## **AROMATHERAPY**

holistic treatment

Massage, eases aches/pains/stress

Sue Law, ITEC, MISPA, Member of GMTA

Hambledon

Tel: 01428 682944

## **R&L FARMER**

Pipswood, New Road, Hydestyle  
GU8 4DJ

Painting, decorating & general repairs

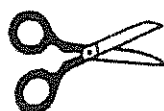
Tel: 01483 860432

## **LIZ POWELL**

Upholstery & Loose Covers

Glenmore, Wheeler Street, Witley

Tel: 01428 683296



## **T.W. LEE LIMITED**

Solid fuel Merchants & Calor Gas  
Dealers  
Bulk Garden Supplies

1 Douglas Drive, (off Catteshall Lane )  
Godalming

Tel: 01483 417266

## **HAMBLEDON VILLAGE HALL**

Available for private parties,  
Receptions etc

Telephone Sue May on  
**01428 682113**  
for terms and bookings



**N.R. SEWELL**  
**PAINTER & DECORATOR**  
Rock Hill Farm  
HAMBLEDON

TEL: 01428 682898



## **GEORGE POWELL AND SON**

Tree Surgery, Lopping,  
Topping, Felling and Logs.

Glenmore  
Wheeler Street, Witley  
Tel: 01428 654394 & 683296



# J. GORRINGE & SON

*Godalming's Funeral Director Since 1873*

55 Hare Lane, Farncombe, Godalming, Surrey GU7 3EF  
(01483) 416403 & 426478



24 hour compassionate service  
Floral tributes  
Private Chapel of rest  
Full stone masonry service  
Pre-payment and arrangement plan

**Our manager and professional staff of funeral directors and arrangers will carry out all necessary arrangements**

Estimates and enquiries without obligation to the resident manager  
PAUL WEIGHTMAN Dip.F.D., M.B.I.F.D.

## Astor Care & Nursing Agency

*Quality Care and Nursing Services to help you  
remain in your own home.*

**'We Care Enough To Provide Only The  
Best'**

Staff also supplied to Nursing & Residential Homes,  
Hospitals etc.

Work available for Qualified Staff and Carers with branches in  
Knaphill, Godalming, Cranleigh, Addlestone & Farnborough.

*Please call today if we can be of help to you or  
yours.*

**Cranleigh 01483 ~ 272755  
Godalming 01483 ~ 414140**

Members of FRES & UKHCA  
Licensed by Surrey and Hampshire County Council

## JACKSON & GOCHER HIRE CENTRE

Harrow Lane, Adj. 84 Farncombe St  
Farncombe Surrey

**Tool and Equipment Hire Specialists  
Marquees and Bouncer**

**Tel: 01483 861988**



For Tools Equipment & Plant Hire  
Sales & Repair



## *HAMBLEDON VILLAGE SHOP*

01428 682176

**CRICKET GREEN, HAMBLEDON**  
**POST OFFICE AND GENERAL STORE**



*Drawing by ;  
Stephan Goddard  
01483 418359*

**WINES – SPIRITS – TOBACCO – SWEETS & ICECREAM**  
**FRESHLY BAKED BREAD & PIES**  
**DELICATESSEN - GROCERIES – FRUIT & VEG**  
**NEWSPAPERS – GREETING CARDS ETC.**  
**DRY CLEANING – SHOE REPAIRS**

**PHONE US WITH YOUR NEEDS!**  
**HOME DELIVERY AVAILABLE.**

## **P. J. COLE**

**CESSPIT & SEPTIC-TANK EMPTYING**

Frye Cross Farm  
Knights Lane, Dunsfold  
Godalming, Surrey  
GU8 4NY  
Tel: (01483) 200336

**ALL OF OUR TANKERS ARE  
FITTED WITH  
DRAIN CLEARING APPARATUS**

As part of our service, our Operator will inspect  
the drains serving the tank and free them from  
blockages if required

**24 HOUR SERVICE**  
**SAME DAY IF**  
**PUBLIC HEALTH HAZARD**

Depot at  
Dunsfold, Godalming, Surrey.  
TELEPHONE: (01483) 200336  
BETWEEN 8 a.m. and 9 p.m.  
**SEVEN DAYS A WEEK**

## **B.J. Pearce**

**Carpenter, General Builder  
&  
Property Maintenance**

***FREE Estimates – No job too small***

32 Middlemarch, Roke Lane  
Witley GU8 5NL

Tel: 01428 683355  
Mobile: 0374 985523